

SCALPELS
SCALPELS
BISTURÍES
BISTURIS





NO.3

CODE
BS 0251-03



NO.3

CODE
BS 0222-03



NO.4

CODE
BS 0223-04



NO.4

CODE
BS 0224-04



NO.7

CODE
BS 0225-07



NO.7K

CODE
BS 0226-07



NO.8

CODE
BS 0227-08



NO.9

CODE
BS 0228-09



NO.10

CODE
BS 0229-10



NO.3L

CODE
BS 0230-31



NO.3 LA

CODE
BS 0231-31A



NO.4 L

CODE
BS 0232-41

NO.4 LA

CODE
BS 0233-41A



NO.5

CODE	DESCRIPTION
BS 0234-05	15 CM



NO.5 A

CODE	DESCRIPTION
BS 0235-05A	15 CM



CODE	DESCRIPTION
BS 0236-21	21 CM
BS 0236-27	27 CM



CODE	DESCRIPTION
BS 0237-21	21 CM
BS 0237-27	27 CM



1:1



1:1



1:1



1:1



1:1

UNSTERIL
NON-STERILE
NO ESTÉRILES
NON-STÉRILES
NON-STERILLI

FIG. 10

FIG. 11

FIG. 12

FIG. 13

FIG. 15

CODE
BS 0321-10

CODE
BS 0321-11

CODE
BS 0321-12

CODE
BS 0321-13

CODE
BS 0321-15

UNSTERIL
NON-STERILE
NO ESTÉRILES
NON-STÉRILES
NON-STERILLI

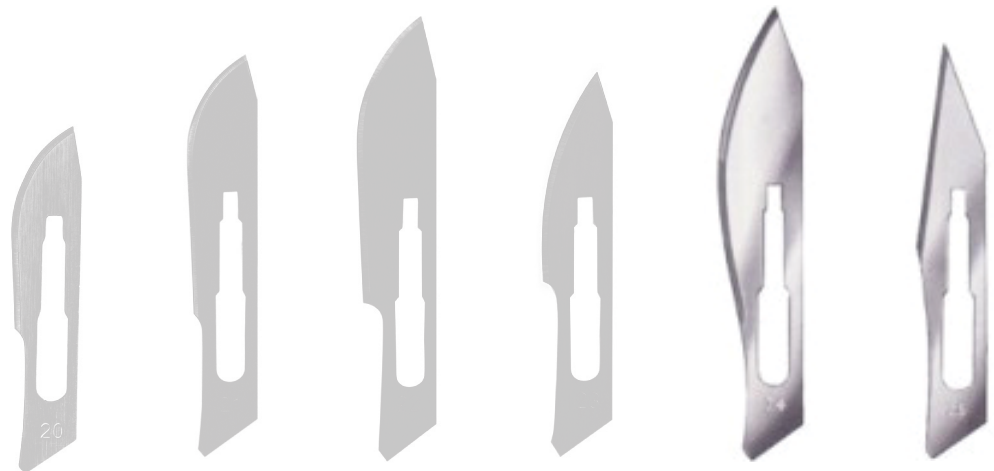
CODE
BS 0322-10

CODE
BS 0332-11

CODE
BS 0322-12

CODE
BS 0322-13

CODE
BS 0322-15



UNSTERIL / NON-STERILE / NO ESTÉRILES / NON-STÉRILES / NON-STERILLI

FIG. 18

FIG. 19

FIG. 20

FIG. 21

FIG. 22

FIG. 23

FIG. 24

FIG. 25

CODE
BS 0321-10

CODE
BS 0321-10

CODE
BS 0321-10

CODE
BS 0321-10

CODE
BS 0321-10

CODE
BS 0321-10

CODE
BS 0321-10

CODE
BS 0321-10

STERIL / STERILE / ESTÉRILES / STÉRILES / STERILLI

CODE
BS 0322-10

CODE
BS 0322-10

CODE
BS 0322-10

CODE
BS 0322-10

CODE
BS 0322-10

CODE
BS 0322-10

CODE
BS 0322-10

CODE
BS 0322-10



FIG. 1

CODE
BS 0421-01



FIG. 2

CODE
BS 0421-02



FIG. 3

CODE
BS 0421-03



FIG. 4

CODE
BS 0421-04



FIG. 5

CODE
BS 0421-05

DESCRIPTION	17 cm
-------------	-------



FIG. 6

CODE
BS 0422-06



FIG. 7

CODE
BS 0422-07



FIG. 8

CODE
BS 0422-08



FIG. 9

CODE
BS 0422-09



FIG. 10

CODE
BS 0422-10

DESCRIPTION	17 cm
-------------	-------



FIG. 1	FIG. 2	FIG. 3	FIG. 4	FIG. 5	FIG. 6	FIG. 7	FIG. 8	FIG. 9
CODE	CODE	CODE	CODE	CODE	CODE	CODE	CODE	CODE
BS 0423-01	BS 0423-02	BS 0423-03	BS 0423-04	BS 0423-05	BS 0423-06	BS 0423-07	BS 0423-08	BS 0423-09



17 CM



FIG. 1	FIG. 2	FIG. 3	FIG. 4	FIG. 5	FIG. 6	FIG. 7	FIG. 8
CODE	CODE	CODE	CODE	CODE	CODE	CODE	CODE
BS 0424-01	BS 0424-02	BS 0424-03	BS 0424-04	BS 0424-05	BS 0424-06	BS 0424-07	BS 0424-08



FIG. 27	FIG. 38	FIG. 40	FIG. 46	FIG. 61	FIG. 63
CODE	CODE	CODE	CODE	CODE	CODE
BS 0425-27	BS 0425-38	BS 0425-40	BS 0425-46	BS 0425-61	BS 0425-63

// DIEFFENBACH //



FIG. 1

CODE
BS 0426-01



FIG. 2

CODE
BS 0426-02



FIG. 3

CODE
BS 0426-03



FIG. 4

CODE
BS 0426-04



FIG. 5

CODE
BS 0426-05



FIG. 6

CODE
BS 0426-06



FIG. 7

CODE
BS 0426-07



FIG. 8

CODE
BS 0426-08



FIG. 9

CODE
BS 0426-09



FIG. 15

CODE
BS 0426-15



FIG. 16

CODE
BS 0426-16

DESCRIPTION

17 CM

// BERGMANN //

// DIEFFENBACH //



FIG. 1

FIG. 2

FIG. 3

FIG. 4



CODE
BS 0427-01

CODE
BS 0427-02

CODE
BS 0427-03

CODE
BS 0427-04



FIG. 1

FIG. 2

FIG. 3

FIG. 4

FIG. 5

FIG. 6

CODE
BS 0428-01

CODE
BS 0428-02

CODE
BS 0428-03

CODE
BS 0428-04

CODE
BS 0428-05

CODE
BS 0428-06



FIG. 1

FIG. 2

FIG. 3

FIG. 4

FIG. 5

FIG. 6

CODE
BS 0429-01

CODE
BS 0429-02

CODE
BS 0429-03

CODE
BS 0429-04

CODE
BS 0429-05

CODE
BS 0429-06



FIG. 1
BS 0430-01



FIG. 2
BS 0430-02



FIG. 3
BS 0430-03



FIG. 4
BS 0430-04



SIMON

DESCRIPTION
20 CM



FIG. 1
BS 0431-01



FIG. 2
BS 0431-02



FIG. 3
BS 0431-03



ULRICH

DESCRIPTION
21 CM



FIG. 1
BS 0432-01



FIG. 2
BS 0432-02



FIG. 3
BS 0432-03



FIG. 4
BS 0432-04



SIMON

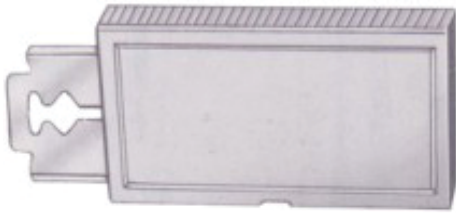
DESCRIPTION
23 CM



CODE	DESCRIPTION
BS 0433-01	7 CM



CODE	DESCRIPTION
BS 0433-02	8 CM



SCATOLA DI 10 LAMETTE
BOITE DE 10 LAMES
PAQUETE DE 10 HOJAS
PACKAGE OF 10 BLADES
PACKUNG Á 10 KLINGEN



CODE

BS 0434-00



TROSTMAN-CHRIS

CODE	DESCRIPTION
BS 0435-09	Ø 5.5 MM
	9 CM



TROSTMAN-CHRIS

CODE	DESCRIPTION
BS 0436-09	Ø 5.5 MM
	9 CM



CODE	DESCRIPTION
BS 0437-11	11 CM



CASTROVIEJO

CODE	DESCRIPTION
BS 0437-13	Ø 8 MM
	13 CM



CODE	DESCRIPTION
BS 0438-18	18 CM

// LISTON //



LAPPENMESSER
FLAP KNIFE
CUCHILLO PARA LÓBULOS
COUPEAU LOBAIRE
COLTELLI PER LOBI

PHALANGENMESSER
PHALANGEAL KNIFE
CUCHILLO PARA FALANGES
COUPEAU À PHALANGES
COLTELLO PER FALANG

ZWISCHENKNOCHENMESSER
INTEROSSEOUS KNIFE
CUCHILLO INTERÓSEO
COUPEAU INTEROSSEUSE
COLTELLO INTEROSSEO

// CATLIN // // LANGENBECK //

SCHNITTLÄNGE
LENGTH OF BLADES
LARGO DE HOJAS
LONGUEUR DES LAMES
LUNGHEZZE DELLE LAME

DESCRIPTION	CODE	CODE	CODE	CODE	CODE	CODE
9.5 CM					BS 0443-09	
11 CM						BS 0444-11
12 CM				BS 0442-12		
13 CM	BS 0439-13					
15 CM						
16 CM	BS 0439-16		BS 0441-16			
17 CM		BS 0440-17				
19 CM	BS 0439-19		BS 0441-19			
20 CM		BS 0440-20				
22 CM	BS 0439-22		BS 0441-22			

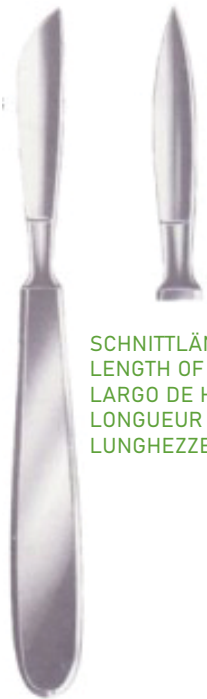
HIRNMESSER
BRAIN KNIVES
CUCHILLOS PARA CEREBRO
COUPEAU À CERVEAU
COLTELLI PER IL CERVELLO

ORGANMESSER
POST MORTEM KNIVES
CUCHILLOS PARA ÓRGANOS
COUPEAUX À AUTOPSIE
COLTELLI PER AUTOPSIA

SEZIERMESSER
AUTOPSY KNIVES
CUCHILLOS PARA AUTOPSIA
COUPEAUX À CARTILAGE
COLTELLI PER AUTOPSIA

ZRESEKTIONSMESSER
RESECTION KNIVES
CUCHILLOS PARA RESECCIÓN
COUPEAU À RÉSECTION
COLTELLI PER RESEZIONE

SCHNITTLÄNGE
LENGTH OF BLADES
LARGO DE HOJAS
LONGUEUR DES LAMES
2 - 5.5 CM



SCHNITTLÄNGE
LENGTH OF BLADES
LARGO DE HOJAS
LONGUEUR DES LAMES
LUNGHEZZE DELLE LAME

LANGENBECK

DESCRIPTION

18 CM



// VIRCHOW //

DESCRIPTION	CODE	CODE	CODE	CODE
8.5 CM				BS 0448-08
11 CM		BS 0446-11	BS 0447-11	
14 CM		BS 0446-14		
16 CM	BS 0445-16			
17 CM		BS 0446-17		
20 CM	BS 0445-20			
24 CM	BS 0445-24			

SEZIERMESSER
AUTOPSY KNIVES
CUCHILLOS PARA AUTOPSIA
BISTOURIS À AUTOPSIE
COLTELLI PER CARTILAGINI

SCHNITTLÄNGE
LENGTH OF BLADES
LARGO DE HOJAS
LONGUEUR DES LAMES
LUNGHEZZA DELLA LAMA
3% - 19.5 CM



HOLZHEFT
WOODEN HANDLE
MANGO DE MADERA
AVEC MANCHE EN BOIS
MANICO IN LEGNO

CODE
BS 0450-19

SCHNITTLÄNGE
LENGTH OF BLADES
LARGO DE HOJAS
LONGUEUR DES LAMES
LUNGHEZZA DELLA LAMA
3% - 9.5 CM



VIRCHOW

CODE
BS 0449-09

KNORPELMESSER
CARTILAGE KNIVES
CUCHILLOS PARA CARTILAGOS
COUTEAUX À CARTILAGE
COLTELLI PER CARTILAGINI



METALLHEFT
METAL HANDLE
MANGO METÁLICO
AVEC MANCHE EN METAL
MANICO DI METALLO

CODE
BS 0451-01



CODE
BS 0451-02

DERMATOM, EINSTELLBAR VON 0,1 BIS 2,0 MM,
KOMPLETT MIT 1 AUSWECHSELBARER KLINGE UND
2 SPANNPLATTEN

DERMATOM, EINSTELLBAR VON 0,1 BIS 2,0 MM,
KOMPLETT MIT 1 AUSWECHSELBARER KLINGE UND
2 SPANNPLATTEN

DERMATOMO, REGULABLE DE 0.1 HASTA 2.0 MMS.
COMPLETO, CON 1 HOJA INTERCAMBIABLE Y
2 PLACAS PARA EXTENDER LA PIEL

DERMATOME, RÉGLABLE EN ÉPAISSEUR DE 0,1 À 2.0 MM,
AVEC 1 LAME INTERCHANGEABLE ET
2 PLAQUES POUR TENDRE LA PEAU

DERMATOMO A MANO, CON REGOLAZIONE
DELLO SPESSORE: DA MM 0.1 A 2.0
LAMA INTERCAMBIABILE, COMPLETO DI
2 PLACCHE PER STENDERE LA PELLE

TRANSPLANTATIONSMESSER
TRANSPLANTATION KNIVES
CUCHILLOS PARA TRANSPLANTACIÓN
COUTEAUX À TRANSPLANTATION
COLTELLI PER TRAPIANTO



THIERSCH

CODE
BS 0452-00



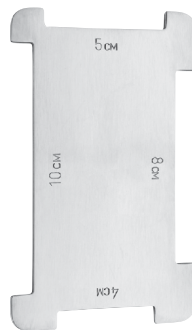
REHN

CODE
BS 0453-00



SCHINK

CODE	DESCRIPTION
BS 0454-00	30 CM



CODE
BS 0454-02

SPANNPLATTE, ALLEIN
SKIN STRAIGHTENING PLATE ONLY
PLACA PARA EXTENDER LA PIEL, SUELTA
PLAQUE POUR TENDRE LA PEAU, SEULE
PLACCA PER STENDERE LA PELLE

CODE
BS 0454-01

ERSATZKLINGE, ALLEIN
SPARE BLADE ONLY
HOJA DE REPUESTO
LAME DE RECHANGE
LAMA DI RICAMBIO

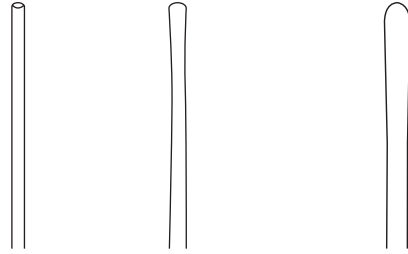
CODE
BS 0454-10

ERSATZKLINGE, ALLEIN
SPARE BLADE ONLY
HOJA DE REPUESTO
LAME DE RECHANGE
LAMA DI RICAMBIO



SILVER

CODE	DESCRIPTION
BS 0454-03	19 CM



DESCRIPTION	Ø 1.0 mm	Ø 1.5 mm	Ø 2.0 mm
11.5 CM	BS 0455-11	BS 0456-11	BS 0457-11
13 CM	BS 0455-13	BS 0456-13	BS 0457-13
14.5 CM	BS 0455-14	BS 0456-14	BS 0457-14
16 CM	BS 0455-16	BS 0456-16	BS 0457-16
18 CM	BS 0455-18	BS 0456-18	BS 0457-18
20 CM	BS 0455-20	BS 0456-20	BS 0457-20
25 CM	BS 0455-25	BS 0456-25	BS 0457-25

CODE	DESCRIPTION
BS 0458-11	11.5 CM
BS 0458-13	13 CM
BS 0458-14	14.5 CM
BS 0458-16	16 CM
BS 0458-18	18 CM
BS 0458-20	20 CM



PROBES
SONDEN

WATSON-CHEYNE

CODE	DESCRIPTION
BS 0459-13	13 CM
BS 0459-18	18 CM

// WATSON-CHEYNE //



PROBES
SONDEN

FISH

CODE	DESCRIPTION
BS 0460-14	14.5 CM
BS 0460-18	18 CM

// FISH //



DIRECTORS
HOHLSONDEN

CODE	DESCRIPTION
BS 0461-11	11.5 CM
BS 0461-13	13 CM
BS 0461-14	14.5 CM
BS 0461-16	16 CM
BS 0461-18	18 CM
BS 0461-20	20 CM



CURVED
GEBOGEN

CODE	DESCRIPTION
BS 0462-14	14.5 CM

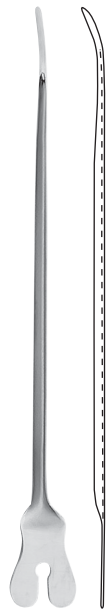


DIRECTORS
HOHLSONDEN

CODE	DESCRIPTION
BS 0463-13	13 CM
BS 0463-14	14.5 CM
BS 0463-16	16 CM
BS 0463-18	18 CM



CODE	DESCRIPTION
BS 0464-13	13 CM
BS 0464-14	14.5 CM
BS 0464-16	16 CM
BS 0464-20	20 CM



NELATON

CODE	DESCRIPTION
BS 0465-16	16 CM



STACKE

CODE	DESCRIPTION
BS 0466-10	10.5 CM
	Ø 1.0 MM

// NELATON //

// STACKE //



BRODIE

CODE	DESCRIPTION
BS 0467-18	20 CM

// BRODIE //

AUS ZINN
OF TIN
DE ESTAÑO
EN ÉTAİN
DI STAGNO



CODE	DESCRIPTION
BS 0468-25	25 CM
BS 0468-30	30 CM
BS 0468-40	40 CM

PFLASTERSPATEL
PLASTER SPATULAS
ESPÁTULAS
SPATULES
SPATOLE



CODE	DESCRIPTION
BS 0469-13	13 CM
BS 0469-14	14 CM



PELTESON

CODE	DESCRIPTION
BS 0470-23	23 CM



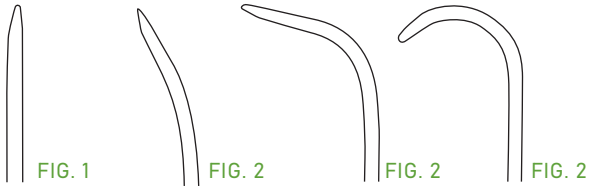
FEIN

CODE	DESCRIPTION
BS 0471-28	28 CM



BUIE

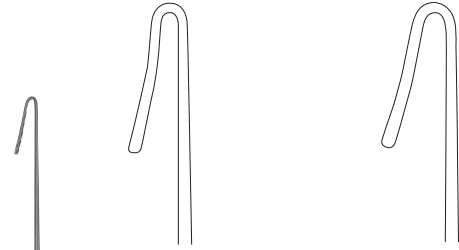
CODE	DESCRIPTION
BS 0472-16	16 CM



LOCKART-MUMMARY

CODE	CODE	CODE	CODE
BS 0473-01	BS 0473-02	BS 0473-03	BS 0473-04

// LOCKART-MUMMARY //



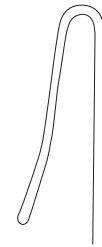
PRATT

CODE
BS 0474-01

PRATT

CODE
BS 0474-02

// PRATT //



PRATT

CODE
BS 0474-03



DESCRIPTION	Ø 1.2 mm	Ø 1.5 mm	Ø 1.7 mm
12.5 CM	BS 0475-12	-	BS 0477-12
16 CM	BS 0475-16	-	BS 0477-16
18 CM	-	BS 0476-18	BS 0477-18



JOBSON-HORNE

CODE	DESCRIPTION
BS 0478-01/16	16 CM





JOBSON-HORNE

CODE	DESCRIPTION
BS 0478-02/18	18 CM



RUND
ROUND
REDONDAS
RODES
ROTONDO

FARRELL

CODE	DESCRIPTION
14 CM	BS 0479-14
16 CM	BS 0479-16



DREIKANT
TRIANGULAR
TRIANGULARES
TRIANGULAIRES
TRIANGOLARE

FARRELL

CODE	DESCRIPTION
14 CM	BS 0480-14
16 CM	BS 0480-16

// FARRELL //



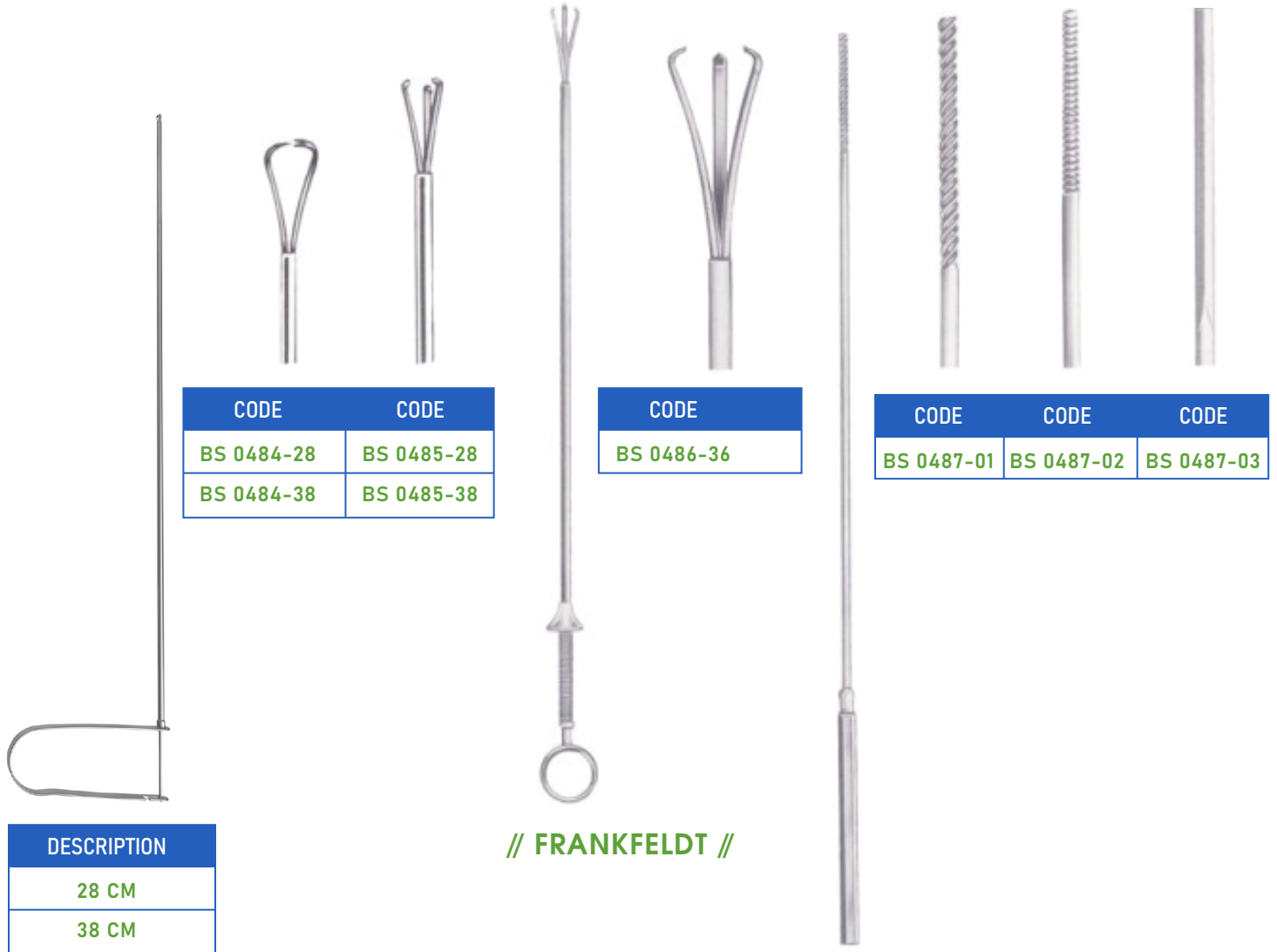
RUND
ROUND
REDONDAS
RODES
ROTONDO

DREIKANT
TRIANGULAR
TRIANGULARES
TRIANGULAIRES
TRIANGOLARE

MOD. RUDOLF

DESCRIPTION	Ø 1.2 mm	Ø 1.5 mm	Ø 1.5 mm
12 CM	BS 0481-12	BS 0482-12	BS 0483-12
14 CM	BS 0481-14	BS 0482-14	BS 0483-14
16 CM	BS 0481-16	BS 0482-16	BS 0483-16
18 CM	BS 0481-18	BS 0482-18	BS 0483-18

// MOD. RUDOLF //



KRAMPFADER-BESTECK IN METALLETUI
VARICOSE VEIN PROBE SET, IN METAL CASE
JUEGO PARA VÁRICES, EN ESTUCHE DE METAL
TROUSSE À VARICES, EN BOÎTE MÉTALLIQUE
ASTUCCIO PER VARICI, IN SCATOLA IN METALLO



NABATOFF

CODE	DESCRIPTION
BS 0488-00	135+100+25 MM

ERSATZTEILE
SPARE PARTS
PIEZAS DE REPUESTO
PIÈCES DE RECHANGE
PEZZI DI RICAMBIO

STERILISIERBAR
STERILIZABLE
ESTERILIZABLE
STÉRILISABLE
STERILIZZABILE



CODE	DESCRIPTION
BS 0488-23	Ø 3 MM

CODE	DESCRIPTION
BS 0488-26	Ø 6 MM



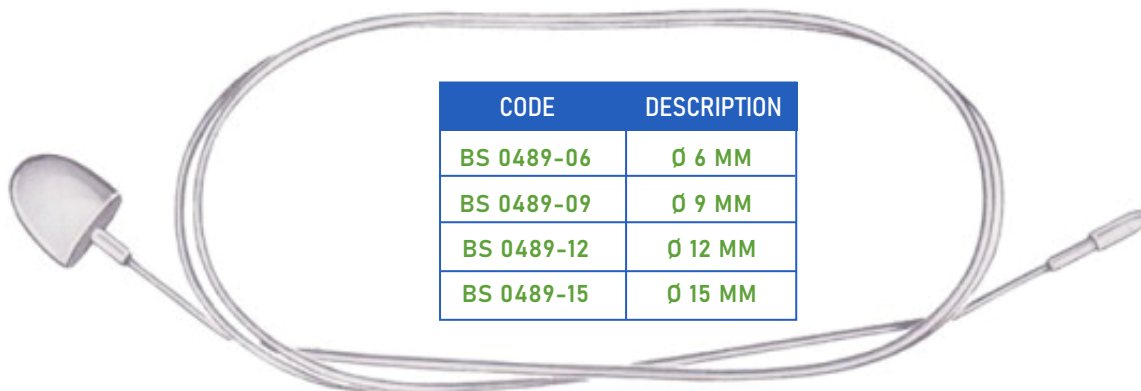
CODE	DESCRIPTION
BS 0488-29	Ø 9 MM



CODE	DESCRIPTION
BS 0488-32	Ø 12 MM



CODE	DESCRIPTION
BS 0488-35	Ø 15 MM



// MYERS //

ENDARTERECTOMIESTRIPPER
ENDARTERECTOMY STRIPPERS
SONDAS PARA ENDARTERECTOMIA
SONDES POUR ENDARTERECTOMIE
SONDE PER ENDARTERECTOMIA

CODE	Ø mm
BS 0490-02	2
BS 0490-03	3
BS 0490-04	4
BS 0490-06	6
BS 0490-07	7
BS 0490-08	8.5
BS 0490-10	10
BS 0490-12	12
BS 0490-14	14



21½ - 55 CM



GRIFF FÜR
HANDIE FOR
MANGO PARA
MANCHE POUR
MANICO PER

CODE
BS 0490-02
BS 0490-14
BS 0490-00

KRAMPFADERSONDEN
PROBES FOR VARICOSE VEINS
SONDAS PARA VÁRICES
SONDES POUR VARICES
SONDE PER VARICI



BIEGSAM
MALLEABLE
MALEABLES
MALLÉABLES
MALLEABILE

CODE	Ø mm
BS 0491-40	40 CM
BS 0491-50	50 CM
BS 0491-65	65 CM
BS 0491-80	80 CM

// BABCOCK //

GEFÄß-SPÜLKANÜLEN
VESSEL IRRIGATING CANNULAS
CÁNULAS DE IRRIGACIÓN PARA
VASOS
CANULES D'IRRIGATION POUR
VAISSEAUX
CANULE PER IRRIGAZIONE PER
VARICI

// SCHMID //

BIEGSAM
MALLEABLE
MALEABLES
MALLÉABLES
MALLEABILE



CODE	DESCRIPTION
BS 0492-03	Ø 3 MM

CODE	DESCRIPTION
BS 0492-04	Ø 4 MM

CODE	DESCRIPTION
BS 0492-05	Ø 5 MM

CODE	DESCRIPTION
BS 0492-06	Ø 6 MM



3 MM
STUMPF
BLUNT
ROMOS
MOUSSE
SMUSSO



CODE	DESCRIPTION
BS 0492-01	8.5 CM
BS 0492-02	21.5 CM



CODE	DESCRIPTION
BS 0493-03/14	14 CM

CODE	DESCRIPTION
BS 0493-03/24	24 CM

// SCHMID //



SCHÄDELSPALTER
SKULL BREAKER
CINCEL ROMPE-CRÁNEO
BURIN POUR LE CRÂNE
DIVISORE PER CRANEO

CODE	DESCRIPTION
BS 0494-00/14	14 CM



RACHIOTOM
RACHIOTOME
RAQUIÓTOMOS
RACHIOTOMES
RACHIOTOMI

CODE	DESCRIPTION
BS 0494-01/22	22 CM

23 MM



OSTEOTOME
OSTEOTOME
OSTEÓTOMO
OSTÉOTOME
OSTEOTOMI

CODE	DESCRIPTION
BS 0494-02/13	13 CM



// BRUNETTI //

CODE	DESCRIPTION
BS 0495-01/28	28.5 CM
BS 0495-02/28	28.5 CM

MUSKELHAKEN
MUSCLE HOOKS
GANCHOS MUSCULARES
CROCHETS POUR MUSCLES
UNCINO PER MUSSOLI



CODE	DESCRIPTION
BS 0496-01/01	6.5 CM

CODE	DESCRIPTION
BS 0496-01/02	7 CM

PRÄPARIERNADELN
MICROSCOPIC NEEDLES
AGUJAS PARA PREPARACIONES
AIGUILLES DE DISSECTION
AGHI PER PREPARAZIONE



CODE	DESCRIPTION
BS 0497-01/13	13 CM

CODE	DESCRIPTION
BS 0497-02/13	13 CM



MIKROSKOPIER-NADELHALTER
MICROSCOPIC NEEDLE HOLDER
PORTA-AGUJA PARA MICROSCOPIA
PORTE-AIGUILLE DE MICROSCOPIE
PORTAGHI PER MICROSCOPIA

KOLLE

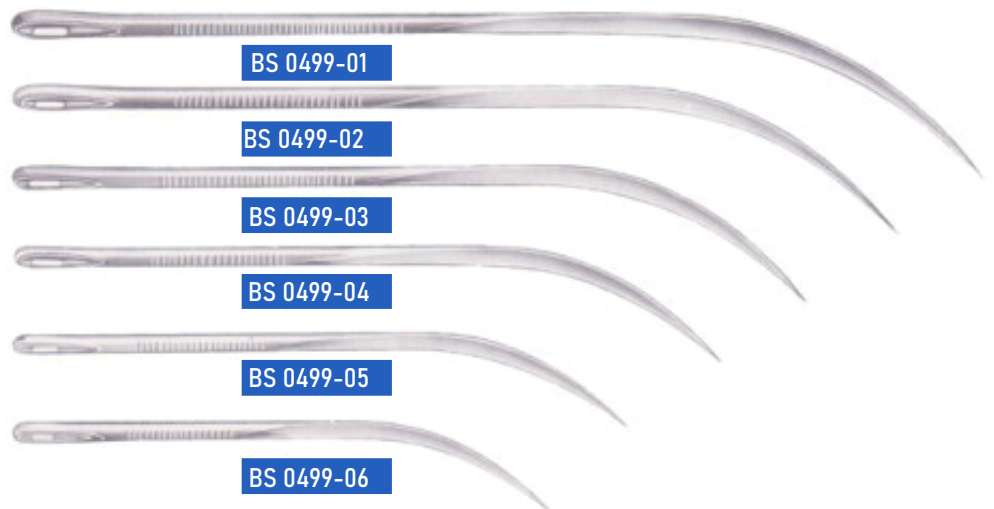
CODE	DESCRIPTION
BS 0498-01/24	24 CM



ÖSE FÜR NADELHALTER
LOOP FOR NEEDLE HOLDER
LAZO PARA PORTA-AGUJA
OEILLET POUR PORTE-AIGUILLE
OCCHIELLO PER PORTAGHI

CODE	DESCRIPTION
BS 0498-10/50	6 CM

SEKTIONSNADELN
POST MORTEM NEEDLES
AGUJAS PARA AUTOPSIA
AIGUILLES D'AUTOPSIE
AGHI PER AUTOPSIA



MIKROSKOPIER-BESTECK IN HOLZETUI
BESTEHEND AUS:

CODE	
BS 0500-10	1 FEINE PRÄPARIERNADEL 1 DTO., GEBOGEN
BS 0500-12	1 DTO., HAKENFÖRMIG 1 PRÄPARIERMEIßEL
BS 0500-13	1 GEBOGENES MESSER 1 FEINE SPITZE PINZETTE, GERADE
BS 0500-14	1 DTO., GEBOGEN 1 DTO., GERADE, GEKREUZT, SELBSTHALTEND
BS 0500-01	1 MIKROSKOPIER-SCHERE, GERADE, EXTRA FEIN
BS 0500-02	
BS 0500-03	
BS 0501-14	

SET OF MICROSCOPIC INSTRUMENTS IN WOODEN CASE
CONSISTING OF:

CODE	
BS 0500-10	1 DISSECTING NEEDLE, FINE 1 IDEM, ANGLED
BS 0500-12	1 IDEM, HOOK SHAPED 1 DISSECTING CHISEL
BS 0500-13	1 MICRO DISSECTING SCALPEL, CURVED 1 MICRO DISSECTING FORCEPS, STRAIGHT
BS 0500-14	1 IDEM, CURVED 1 IDEM, STRAIGHT, CROSS-ACTION, SELF-RETAINING
BS 0500-01	1 MICRO DISSECTING SCISSORS, STRAIGHT, ESPECIALLY FINE
BS 0500-02	
BS 0500-03	
BS 0501-14	



CODE
BS 0500-00

CAJA DE MICROSCOPIA EN ESTUCHE DE MADERA
COMPUESTA DE:

CODE	
BS 0500-10	1 AGUJA PARA PREPARACIONES FINA 1 ID, CURVA
BS 0500-12	1 ID. EN FORMA DE GANCHO 1 CINCEL PARA PREPARACIONES
BS 0500-13	1 CUCHILLO CURVO 1 PINZAS DE DISECCIÓN, FINAS, AGUDAS, RECTAS
BS 0500-14	1 ID, CURVAS 1 ID. RECTAS, CRUZADAS, PERMANENTE
BS 0500-01	1 MICRO-TIJERAS, RECTAS, EXPECIAMENTE FINAS
BS 0500-02	
BS 0500-03	
BS 0501-14	